

A WALK UP AND DOWN STATION STREET: THEN AND NOW



Merged image of 62-64 Station Street using 2023 photograph and a 1966 photograph from the CHAD archive obtained from the Annesley OC Heritage Extra Facebook page (AOCHE)

This booklet has been written by Roger Drew. I was born in Kirkby but my family moved away in 1960 when I was a baby. My grandfather ran a shoe shop on Station Street for more than 40 years. This booklet grew out of a desire to understand his and my mother's diaries as they made frequent references to people and businesses in Station Street.

This booklet describes a walk up and down Station Street in Kirkby comparing what it is like now with what it was like previously, particularly around the time of the second world war. It briefly describes each building on, and each road that intersects with, Station Street. The booklet starts with odd numbers and deals with them in ascending order. It then considers buildings with even numbers in descending order.

More details are available on the Drew Family Diaries website <https://drewfamily.uk/> including a PDF version of this booklet. There is an overall [description](#) of the walk, [accounts](#) of individual buildings and sets of [narrated photos](#)

Printed copies of this booklet can be obtained from Kirkby Heritage Centre at 13 Kingsway, Kirkby in Ashfield

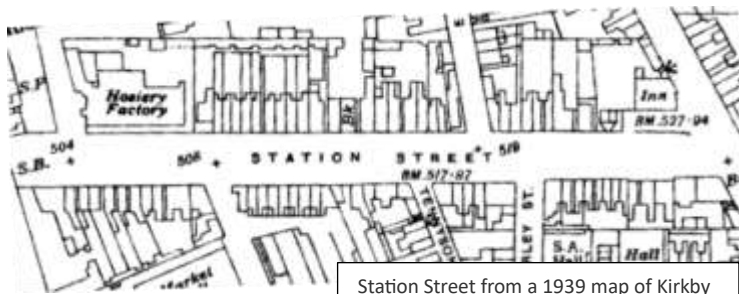
Origin of the Name



East Kirkby Railway Station in the 1950s. This image is from Kirkby Heritage Centre from the Steaming back to Kirkby website.

Station Street derives its name from East Kirkby Railway Station which stood at the junction of Urban Road and Station Street, at the corner of what is now Portland Street but was then Factory Road. At the time, Kirkby had three railway stations – Kirkby Bentinck, Kirkby in Ashfield Central and Kirkby in Ashfield East. They all closed in the 1960s.

After closure, East Kirkby Station buildings were used as the base for a motor discount shop and accessories centre before being demolished.



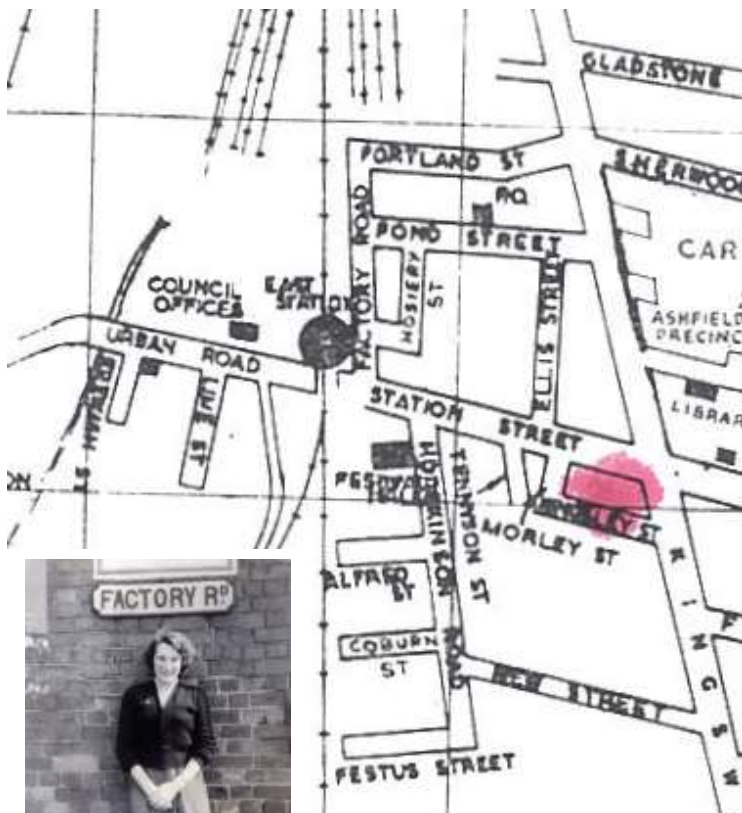
Station Street from a 1939 map of Kirkby

More details are available on the Drew Family Diaries website <https://drewfamily.uk/> including a PDF version of this booklet. There is an overall [description](#) of the walk, [accounts](#) of individual buildings and sets of [narrated photos](#)

Printed copies of this booklet can be obtained from Kirkby Heritage Centre at 13 Kingsway, Kirkby in Ashfield

Factory Road/Portland Street

Originally, the road next to East Kirkby Station was called Factory Road, as shown on this 1969 map. However, it was later renamed so that the entirety of this road became known as Portland Street.



Part of 1969 map showing Factory Road and Portland Street with (left) photo of Mavis Coleman née Brewitt in 1958 under Factory Road sign. This was posted by her son, Gary Coleman, on Kirkby Living Memory Facebook Group (KLM).

More details are available on the Drew Family Diaries website <https://drewfamily.uk/> including a PDF version of this booklet. There is an overall [description](#) of the walk, [accounts](#) of individual buildings and sets of [narrated photos](#)

Printed copies of this booklet can be obtained from Kirkby Heritage Centre at 13 Kingsway, Kirkby in Ashfield

The Factory

Factory Road got its name from the large hosiery factory on the corner with Station Street. Built in around 1860, this factory was known as William Walker's. The building was demolished in 1966. However, latterly, it was owned by the Kirkby Seating Company who made sprung upholstered car seats. This explains why locally it was known as the "*Spring Factory*". At some point in the sixties, the "*Spring Factory*" closed at this location and moved to a factory on Queen's Street off Lindley's Lane.

More recently, Kirkby Motor Services was based at this location although it appears to have been taken over by Lindley's Autocentre in 2022.



Walker's hosiery factory. Image is credited to Kirkby Heritage Centre and obtained from the My Trail website



Kirkby Motor Services in August 2023

More details are available on the Drew Family Diaries website <https://drewfamily.uk/> including a PDF version of this booklet. There is an overall [description](#) of the walk, [accounts](#) of individual buildings and sets of [narrated photos](#)

Printed copies of this booklet can be obtained from Kirkby Heritage Centre at 13 Kingsway, Kirkby in Ashfield

1 Station Street

From the garage, there is a run of terraced properties from 1 to 19 Station Street. Anemona Sweets opened at 1 Station Street in June 2024. Prior to that, it was empty. However, from 2016 to 2022, it



housed PAWS Charity Shop. Previous occupants included the building society, the Derbyshire and a number of firms of solicitors including Cleaver Thomson; J-J Spencer, Haigh & Sweet; and Rorke & Jackson. During the second world war, auctioneer and valuer, Thomas Booth occupied 1 Station Street.

Between the garage and the terraced row is a fairly modern building that currently houses Swit Swoo Fashion Boutique. This is 1B Station Street. Previously, Kirkby Car Spares and Accessories were based here.



Top - 1 Station Street in August 2023. While the PAWS sign is still there, the shop looks closed

Above left – advert for Kirkby Car Sales Accessories Centre which appeared in Notts Free Press on 19 March 1976. It features on Kirkby-in-Ashfield People Facebook Group (KIAP)

Above right – Swit Swoo Fashion Boutique in August 2023

More details are available on the Drew Family Diaries website <https://drewfamily.uk/> including a PDF version of this booklet. There is an overall [description](#) of the walk, [accounts](#) of individual buildings and sets of [narrated photos](#)

Printed copies of this booklet can be obtained from Kirkby Heritage Centre at 13 Kingsway, Kirkby in Ashfield

3 Station Street

Number 3 Station Street was empty at the time of writing. Between 2003 and 2022, Imageworks Hair and Beauty were based here. Prior to that, a range of different shops were based here. In the eighties, estate agents Holders were here and, at the time of the second world war, the premises were occupied by a boot repairer, Thomas Hargreaves. Prior to that, the premises were occupied at different times by a fruiterer, William Chappell, and a butcher, William Lilley.



3 Station Street in August 2023. The property looks empty but there is a banner for AAE (All Aspects Electrical) over the name board

More details are available on the Drew Family Diaries website <https://drewfamily.uk/> including a PDF version of this booklet. There is an overall [description](#) of the walk, [accounts](#) of individual buildings and sets of [narrated photos](#)

Printed copies of this booklet can be obtained from Kirkby Heritage Centre at 13 Kingsway, Kirkby in Ashfield

5 Station Street

At the time of the second world war, 5 Station Street was occupied by well-known local photographer Fred Maltby. Shortly after the war, in 1948, it became Maltby and Griffiths with Harold Griffiths and Len Scothern as its Directors. Maltby and Griffiths were well-known wedding photographers and they also produced postcards. Fred Maltby's photos were widely used, e.g. in newspaper reports.



1950 advert for Maltby and Griffiths

Fred Maltby originally rented the premises from Harry Dyson Fox who, in 1928, was running a confectionery shop at 5 Station Street in addition to the tobacconist next door at number 7.

Since Maltby and Griffiths closed, 5 Station Street has been occupied by a number of different firms including recruitment firm Regional Driving Services, mobile phone repair company Ifix4you, World Food Store and, most recently, Zee Cosmetics and Fabrics.



More details are available on the Drew Family Diaries website <https://drewfamily.uk/> including a PDF version of this booklet. There is an overall [description](#) of the walk, [accounts](#) of individual buildings and sets of [narrated photos](#)

Printed copies of this booklet can be obtained from Kirkby Heritage Centre at 13 Kingsway, Kirkby in Ashfield

7 Station Street



Now, there are three hairdressers/salons in a line from 7 to 11 Station Street. The first of these is Millionwaves which has been there since at least 2015. Previously, there were other hairdressers at number 7 including Christopher Wayne and John's Hair Fashions, visible in the photo on the previous page. However, from at least 1912 to the second world war, the premises housed a tobacconist by the name of Harry Dyson Fox. Harry was a Christadelphian. He was exempted from military service by Kirkby Tribunal in the first world war as a conscientious objector. Of interest perhaps is that, even earlier than this, in 1905, Haycock's hairdressing salon opened.



Left – Harry Dyson Fox's tobacconist shop. Photo courtesy of Janine Vardy
Right – advert from Hucknall morning paper in 1905. Source Find My Past

More details are available on the Drew Family Diaries website <https://drewfamily.uk/> including a PDF version of this booklet. There is an overall [description](#) of the walk, [accounts](#) of individual buildings and sets of [narrated photos](#)

Printed copies of this booklet can be obtained from Kirkby Heritage Centre at 13 Kingsway, Kirkby in Ashfield

9 Station Street

The second of the salons is Kirkby Ashfield Nails and Beauty at 9 Station Street. They have been located there since 2017. Before that, businesses there included P & K Pet Supplies, the estate agent Location, Blockbuster, the Co-op and clothiers Thomas Welch and Son, visible on an earlier photo.



Above - this photo is possibly from the mid-sixties. At this point, number 9 is Co-operative Television and Electrical and number 11 is the Co-op's Tailoring Menswear Department. Source KLM

Below - Extract from Edith Seanson's second booklet "*I Also Remember*"

From at least 1912 until the second world war, 9 Station Street was home to a ladies' outfitter, Mrs M H Fox. Despite having the same name, she appears to have been unrelated to her neighbour, Harry Dyson Fox. Her forenames appear to have been Lucy Ann. M H were her husband, Matthew Henry's initials.

We move on a little further, to Mrs-Fox's Millinery business next door. This is rather a big shop, because other things are stocked besides millinery and fancy drapery. Upstairs, Marie and May are busy making hats, when they are not helping Mrs-Fox, to sell them. Incidentally, Matthew Henry Fox is a well known figure in the town, and with his brother, they keep bees, and so sell honey. It is only a small shop next door, compared to the millinery business, it is a Photographer's. Maltby and Griffiths, established by Ken Maltby, who not only take photographs, they sell cameras and other articles to help amateur photographers.

More details are available on the Drew Family Diaries website <https://drewfamily.uk/> including a PDF version of this booklet. There is an overall [description](#) of the walk, [accounts](#) of individual buildings and sets of [narrated photos](#)

Printed copies of this booklet can be obtained from Kirkby Heritage Centre at 13 Kingsway, Kirkby in Ashfield

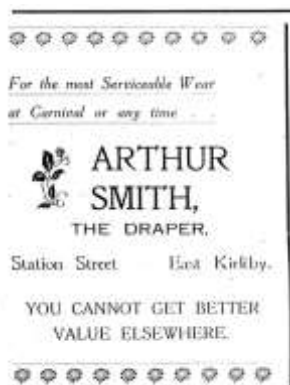
11 Station Street

The third of the hairdressers/salons is Andrew's barber shop at 11 Station Street. It has been located there since 1996. Previously, another gent's hairdresser, G W Whetton was based there. In the sixties, the Co-op occupied both 9 and 11 Station Street. It appears that Thomas Welch and Son may have done the same subsequently. Sometimes, their address was given as 9 Station Street and sometimes as 11 Station Street.



Advert for Andrew's Barber Shop . Source AOCHE

From 1912 until the second world war, 11 Station Street was occupied by draper, Arthur Smith. He was fondly remembered by Edith Searson as he had supplied her with boxes of food to send to her brother in the trenches during the first world war. Arthur Smith himself had applied to Kirkby Tribunal for an exemption to military service.



Advert for Arthur Smith in 1935 Carnival Magazine. Source AOCHE

More details are available on the Drew Family Diaries website <https://drewfamily.uk/> including a PDF version of this booklet. There is an overall [description](#) of the walk, [accounts](#) of individual buildings and sets of [narrated photos](#)

Printed copies of this booklet can be obtained from Kirkby Heritage Centre at 13 Kingsway, Kirkby in Ashfield

13 Station Street



Now, at 13-15 Station Street, there are two takeaways. The first of these, Sunrise Pizza and Kebab House, has been at number 13 since at least 2008.

For many years, 13 Station Street housed a number of butchers. In the sixties and seventies. Jack Walton was there. Before that, other butchers included John Kelsey, John William Gill and possibly Middups. Apparently, Jack Walton was the last butcher there and he died suddenly. Following his death, the shop was empty for a long time before opening as Andy's fish and chip shop.

From at least 1903 to 1905, F Hempstock and Co were based at 13 Station Street. They appear to have sold clothes, bed linen etc.



Top – 13-15 Station Street in August 2023

Above left – news cutting of Station Street in 1950. This shows Jack Walton at number 13 and Midland Cafe at number 15. Source KLM.

Above right – advert for Jack Walton from 1976. Source KIAP

More details are available on the Drew Family Diaries website <https://drewfamily.uk/> including a PDF version of this booklet. There is an overall [description](#) of the walk, [accounts](#) of individual buildings and sets of [narrated photos](#)

15 Station Street

The second takeaway is New Diamond Kebab at 15 Station Street. It has been there since at least 2015. From 2009 to 2011, a Chinese takeaway. Home Chef was there. Prior to that, businesses located there included Laundry Station, Midland Café, and Curtains and Covers. At the time of the second world war, Gertrude Dale was running a confectioners at 15 Station Street. In 1928, a different confectioner was located there, Jackson Brothers.

In 1912, William Chappell was listed as a fruiterer at 15 Station Street with Charles Vine listed as a boot repairer next door at number 13. However, in 1920, there was a notice in the Mansfield Reporter that Charles Vine, of 15 Station Street, was selling all his equipment and household furniture because of ill-health.



Notice of sale of boot repairing stock-in-trade by C Vine of 15 Station Street in the Mansfield Reporter of January 1920 obtained through paid subscription to Find My Past

More details are available on the Drew Family Diaries website <https://drewfamily.uk/> including a PDF version of this booklet. There is an overall [description](#) of the walk, [accounts](#) of individual buildings and sets of [narrated photos](#)

Printed copies of this booklet can be obtained from Kirkby Heritage Centre at 13 Kingsway, Kirkby in Ashfield

17 Station Street



Currently, 17 Station Street appears to be home to Independent Mortgage Advice although it is unclear if that business is still operating.

There have been a number of opticians based here including Woolcott, Adams, FC Davison and, during the second world war, Dorothy Littlewood. In 1928, a watchmaker William Henry Simmons was based here.

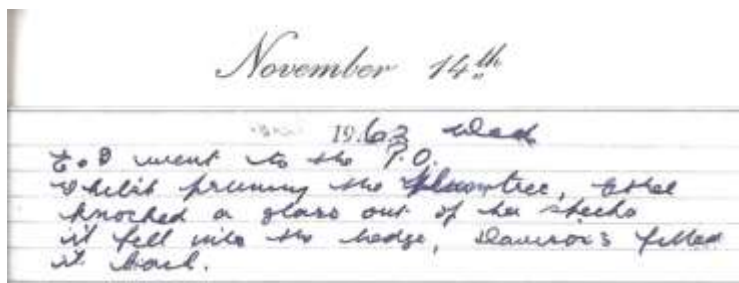
Advert for Woolcott Opticians. Sources AOCHE

Woolcott
OPTICIANS



672 Mansfield Road
Nottingham
NG5 2GE
Tel: 0115 962 1069

17 Station Street
Kirkby-in-Ashfield
Notts NG17 7AQ
Tel: 01623 752345



Entry from my grandfather's diary for 1962 which explains that grandma knocked a lens out of her glasses while pruning. The optician, Davison's, fitted it back for her

More details are available on the Drew Family Diaries website <https://drewfamily.uk/> including a PDF version of this booklet. There is an overall [description](#) of the walk, [accounts](#) of individual buildings and sets of [narrated photos](#)

Printed copies of this booklet can be obtained from Kirkby Heritage Centre at 13 Kingsway, Kirkby in Ashfield

19 Station Street



19 Station Street in August 2023

Since around 2018, Kirkby Food and Wine has been at 19 Station Street, the last in this run of terraced shops. Before that it was called Food and Wine, Best Food and Wine and Lifestyle Express. Earlier, it was Dave's News and Booze and, in the eighties, Bamford Newsagents. In the sixties, stationers Baxter and Platt were based here.

At the time of the second world war, Standard Gramophone Company were based here. Although they did sell radios and record players etc., they sold much more. For example, in one of his books, Mark Ashfield describes buying his first bike here. They had two separate locations in Station Street, the other was at number 37.



1935 Standard Gramophone Company advert focused on bikes. Source AOCHE



Example of Harris-Barke record sleeve

In 1928, William Harris-Barke occupied number 19. He was a furniture dealer and cycle agent. He also sold music and records. He was organist at Kirkby Baptist Church for over 46 years and died suddenly while playing the organ. He was also one of a number of Kirkby non-conformists who appeared in court in 1903 for refusing to pay the part of their rates that, under the Education Act, was used to fund Church of England schools.

More details are available on the Drew Family Diaries website <https://drewfamily.uk/> including a PDF version of this booklet. There is an overall [description](#) of the walk, [accounts](#) of individual buildings and sets of [narrated photos](#)

Printed copies of this booklet can be obtained from Kirkby Heritage Centre at 13 Kingsway, Kirkby in Ashfield

21 Station Street

After the run of terraced shops is a detached building. This is 21 and 21A Station Street. Domino's Pizzas have been here since 2020. Prior to 2018, this was the location for National Westminster Bank.

Although the front of the building looks relatively modern, it does appear on a 1939 map. On this, it is divided into two with the right hand side marked "Bk", presumably for bank. Apparently, this right hand part was 21A. The left hand side was occupied by Challans Gift Shop which was an expansion from the hardware store at 27 Station Street. Before that, at the time of the second world war, it was occupied by Tylers Shoes. The upstairs of 21 Station Street was used as offices by solicitor Rorke and Jackson and as a dental laboratory by Kenneth White.



Domino's at 21 Station Street in August 2023



Above – Nat West at 21 Station Street. Source AOCHE
Left – Whit Walks late seventies. Photo by Sharon Millan. It shows Challans Gift Shop and the bank. Source KLM

More details are available on the Drew Family Diaries website <https://drewfamily.uk/> including a PDF version of this booklet. There is an overall [description](#) of the walk, [accounts](#) of individual buildings and sets of [narrated photos](#)

Printed copies of this booklet can be obtained from Kirkby Heritage Centre at 13 Kingsway, Kirkby in Ashfield

23 Station Street

After Domino's, there is a small alley followed by another run of terraced houses. The first of these, number 23, is distinctive. The house is set back with a single storey building at the front. King Clouds Vape Shop has been there since at least July 2018. Before that, it housed the Harvish Convenience Store, G I Jane's, Kirkby Carpets and, in the eighties, the Gas Showrooms.



From the end of the 19th century until at least the second world war, this property was occupied by stone and marble masons, Hutchinson and Sons. This business is well-remembered in Kirkby. As children, some were afraid of the “*miniature graveyard*” at the front of the shop while others welcomed its coolness on a hot day.



Top – King Cloud vape shop in August 2023.

Above – Station Street in the eighties with Gas showroom on right. Source KIAP

Left – postcard showing Hutchinson's shop

More details are available on the Drew Family Diaries website <https://drewfamily.uk/> including a PDF version of this booklet. There is an overall [description](#) of the walk, [accounts](#) of individual buildings and sets of [narrated photos](#)

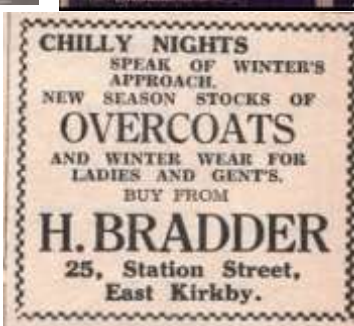
Printed copies of this booklet can be obtained from Kirkby Heritage Centre at 13 Kingsway, Kirkby in Ashfield

25 Station Street

Currently, 2020 Vision are operating a community kitchen at 25 Station Street. From November 2018 to June 2023, the Triple 7 Bar and Kitchen were here. Before this, from 2008 to 2018, the tea and coffee shop here was called Georgie Porgie.

At the time of the second world war, a ladies' hairdresser was based here. There have been a number of hairdressers here since then including Jackie, Jill Redfern, Tony and Janet Pritchard, Berenice, Mrs Lester and Hilda Copeland.

Before the second world war, there were various shops here including Briggs millinery, H Bradder's clothing and the Henfreys, a painter and a photographer.



Top left – 23-27 Station Street in August 2023

Top right – photo of Jill Redfern outside her salon courtesy of Chris Redfern

Above left – advert for Hilda Copeland from 1956 programme for Handel's Messiah

Above right – advert for H Bradder courtesy of Trevor Lee

More details are available on the Drew Family Diaries website <https://drewfamily.uk/> including a PDF version of this booklet. There is an overall [description](#) of the walk, [accounts](#) of individual buildings and sets of [narrated photos](#)

Printed copies of this booklet can be obtained from Kirkby Heritage Centre at 13 Kingsway, Kirkby in Ashfield

29-31 Station Street



The final shop in this terraced row is 29-31 Station Street. In August 2023, it was occupied by William Hill but there was a “for sale” sign on the building. William Hill have been based there since at least 2008.

In the 1930s and during the second world war, 29 Station Street was occupied by Globe Tea Company managed by James Duckworth. I am not sure if they also occupied number 31.



Before this, 29 and 31 were separate shops. In 1912 and 1928, 29 was occupied by Wallace’s, a grocer, managed by Arthur Titterton. At 31 was clothiers, Banks and Sons. Thomas Banks was a well-known local figure, described in detail by Mark Ashfield and Edith Searson. Banks Avenue is named after him.

It appears that 29 and 31 remained separate shops into the seventies and potentially later as number 31 was occupied by Challans Gift Shop when it moved from 21 Station Street, see photo.



Top left – 29-31 Station Street in August 2023

Middle right – 1935 advert for the Globe Tea Company. Source AOCHE

Above – 1935 advert for T Banks. Source AOCHE

Above right – photo showing Challans Gift Shop. Source KIAP

More details are available on the Drew Family Diaries website <https://drewfamily.uk/> including a PDF version of this booklet. There is an overall [description](#) of the walk, [accounts](#) of individual buildings and sets of [narrated photos](#)

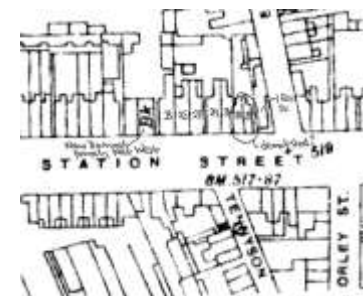
Printed copies of this booklet can be obtained from Kirkby Heritage Centre at 13 Kingsway, Kirkby in Ashfield

What Happened to 33-35 Station Street?

Now, there is a gap in Station Street numbers between William Hill (31) and Hungrilla (37). Posh Meze Bar and Grill is there but that is, in fact, numbered 1 Ellis Street.

It appears there were buildings there but they were demolished at some point. In the seventies, this area was fenced off, see photo on previous page. Now, there is a fairly wide alley that leads to and from Ellis Street car park. It is clear, from maps and photos, that there were two houses here with a lower roof line than the preceding terrace.

At the time of the second world war, 33-35 Station Street were occupied by fruiterer and greengrocer James Kirby. Prior to that, in 1912, a different greengrocer, Frederick Herbet Rickett, was at number 35 and dyers J Holroyd and Co were at number 33. James Kirby was well-known locally and was described by both Mark Ashfield and Edith Season. He is still remembered by many in the community.



Top left – annotated 1939 map showing 33-35 Station Street
Left – postcard annotated to show 33-35 Station Street
Above – current gap where 33-35 Station Street stood: Source AOCHE

More details are available on the Drew Family Diaries website <https://drewfamily.uk/> including a PDF version of this booklet. There is an overall [description](#) of the walk, [accounts](#) of individual buildings and sets of [narrated photos](#)

Printed copies of this booklet can be obtained from Kirkby Heritage Centre at 13 Kingsway, Kirkby in Ashfield

Ellis Street

In 1939, Ellis Street ran from Station Street to Pond Street. But, now it ends at a roundabout. Straight ahead, a continuation of Pond Street leads to Lowmoor Road. To the right is an exit from Morrison's car park.

Right – Ellis Street on 1939 map
Below – Posh Meze and Grill at 1 Ellis Street in July 2023.
Source AOCHE



The electrical business, C Kalynycz, started at 3 Ellis Street before moving to 2 Ellis Street and then to Station Street.



The Posh Meze Bar and Grill is on the corner of Ellis Street at 1 Ellis Street. Previous businesses here included Ashfield Dry Cleaners and Wilbourn's Garden and Pet Centre. Prior to that, 1 Ellis Street was a doctor's residence and surgery. Dr Waller lived here and before him, Dr Mackenzie.



Far left – Ashfield Dry Cleaners was at 1 Ellis Street:
Source AOCHE
Left – advert for C Kalynycz when at 2 Ellis Street. Source AOCHE

More details are available on the Drew Family Diaries website <https://drewfamily.uk/> including a PDF version of this booklet. There is an overall [description](#) of the walk, [accounts](#) of individual buildings and sets of [narrated photos](#)

Printed copies of this booklet can be obtained from Kirkby Heritage Centre at 13 Kingsway, Kirkby in Ashfield

37 Station Street

Hungrilla Gourmet Grill opened at 37 Station Street relatively recently. Until 2021, Lloyds Bank, Lloyds TSB and TSB were based here.



At the time of the second world war, Leonard Morris a picture frame maker was based here. Before that, Wightman's jewellers were here and so were Standard Gramophone Company for a while.



Left – postcard showing Wightman's on corner of Ellis Street and Station Street
Right – watch from Wightman's

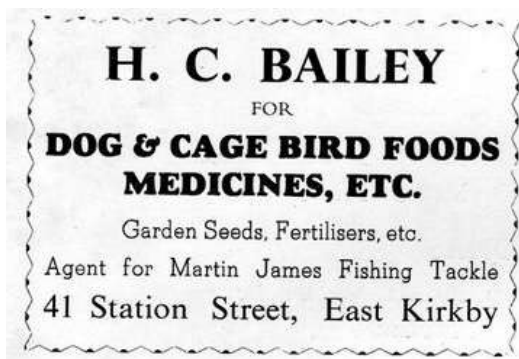
More details are available on the Drew Family Diaries website <https://drewfamily.uk/> including a PDF version of this booklet. There is an overall [description](#) of the walk, [accounts](#) of individual buildings and sets of [narrated photos](#)

Printed copies of this booklet can be obtained from Kirkby Heritage Centre at 13 Kingsway, Kirkby in Ashfield

What Happened to 39-41 Station Street?

Currently, there does not seem to be either 39 or 41 Station Street and I wonder if these were absorbed into number 37. Certainly, as early as the 1920s, Wightman's occupied 37-41 Station Street.

Other shops that were located at number 41, or in that vicinity, before the second world war included tailors, Gilbert Brothers; Musson Fish and Chips; and Morris Fretwork. Later, H C Bailey ran a pet shop there. I wonder if he was connected to Wightman's as James Toon Bailey, a sub-postmaster, was William Henry Wightman's stepson.



Advert for H C
Bailey's pet shop at
41 Station Street .
Source KLM

Photo from
the seventies
in which H C
Bailey's is next
to the Trustee
Savings Bank.
Photo credited
to Kirkby
Heritage
Centre



More details are available on the Drew Family Diaries website <https://drewfamily.uk/> including a PDF version of this booklet. There is an overall [description](#) of the walk, [accounts](#) of individual buildings and sets of [narrated photos](#)

Printed copies of this booklet can be obtained from Kirkby Heritage Centre at 13 Kingsway, Kirkby in Ashfield

43 Station Street

Currently, this shop appears to be vacant. However, Crazy Maisie's Models are expected to open here in June 2024. Up until 2022, a variety of taxi companies had been based there including A2B Cars, Arrow Cars, Oasis 750 Taxis and DG Taxis.

At the time of the second world war, a tobacconist/sweet shop was there, Thomas Smith. Previously, the tobacconist had also been called Jollys and Hodgkinsons. Later, it operated as a jewellers, also called Smiths, see earlier photo.



43 Station Street in August 2023

Advert for Smith's of 43 Station Street that appeared in a 1956 programme for Handel's Messiah



More details are available on the Drew Family Diaries website <https://drewfamily.uk/> including a PDF version of this booklet. There is an overall [description](#) of the walk, [accounts](#) of individual buildings and sets of [narrated photos](#)

Printed copies of this booklet can be obtained from Kirkby Heritage Centre at 13 Kingsway, Kirkby in Ashfield

45 Station Street

The barber Gentz Cut is located at 45 Station Street and has been there since at least 2017. From around 1984 to 2014, the premises housed Ian Osborne's newsagents.

At the time of the second world war, Edith Smith ran a newsagent there. Earlier newsagents there include Fred Wood and Albert and Esther Bradley. In the sixties, Purdy's greeting card shop was there and, in 1912, a haberdasher Esther Lane was there. In 1899, William Townsend was a stationer there.



Left – 45 Station Street in August 2023

Below left – 2001 photo showing Osborne's at 45 Station Street. Source AOCHE

Below – advert for Purdy's from 1969 directory

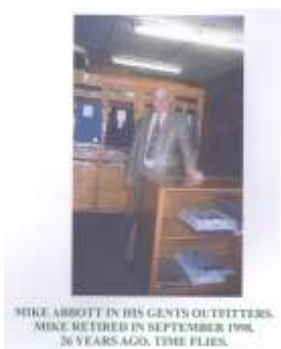


More details are available on the Drew Family Diaries website <https://drewfamily.uk/> including a PDF version of this booklet. There is an overall [description](#) of the walk, [accounts](#) of individual buildings and sets of [narrated photos](#)

Printed copies of this booklet can be obtained from Kirkby Heritage Centre at 13 Kingsway, Kirkby in Ashfield

47 Station Street

Although the Headway charity shop was here from around 2009 to 2023, it has recently closed. Previous businesses here include Buywise, Klick photography and Mike Abbott's clothes shop. He ran the business from 1976, when he took over from Edgar Coates, until he retired in 1998. The till from Mike Abbott's shop is still used at Kirkby Heritage Centre.

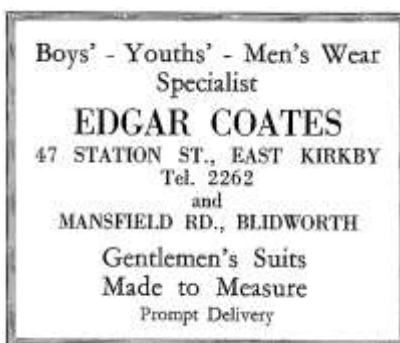


At the time of the second world war, outfitters Edgar Coates were here. Edgar Coates had started working as assistant to Tommy Banks in 1920. He set up his own business in 1933. He was known for promoting boxing and wrestling with his brothers Joe and Charlie. In 1928, a milliner Miss Cassandra E B Lane was based here.

Top right – 47 Station Street in 2023

Above – photo of Mike Abbott which featured in the Kirkby Heritage Centre calendar for September 2024

Right – advert for Edgar Coates in 1950 official guide



More details are available on the Drew Family Diaries website <https://drewfamily.uk/> including a PDF version of this booklet. There is an overall [description](#) of the walk, [accounts](#) of individual buildings and sets of [narrated photos](#)

Printed copies of this booklet can be obtained from Kirkby Heritage Centre at 13 Kingsway, Kirkby in Ashfield

49-51 Station Street



Modern-looking building that constituted 49-51 Station Street in August 2023

This looks like a relatively modern building, at least at the front. Housed here currently are Kim Nails, Best Wishes, Ashfield Therapy Centre and Body Grooves School of Dancing. Previous occupants include Bellton's Bakery, Occasions, Farmfoods, Krackers, Sherwoods, Motoring World and Motorist Discount Centre.

Perhaps the premises are best-known as the home of Newcombes, a drapers that became a kind of department store. Newcombes the drapers were based here during the second world war. The Newcombes, as a family, feature prominently in my grandad's diaries.



Above – Newcombes in the 1960s – photo from Helen Jay

Right – adverts from 1953 and 1935 (far right). 1935 image is from AOCHE



More details are available on the Drew Family Diaries website <https://drewfamily.uk/> including a PDF version of this booklet. There is an overall [description](#) of the walk, [accounts](#) of individual buildings and sets of [narrated photos](#)

Printed copies of this booklet can be obtained from Kirkby Heritage Centre at 13 Kingsway, Kirkby in Ashfield

55 Station Street

After 49-51 Station Street is a low building housing Lighthouse Estate Agents and Letting.



This building is 55 Station Street and is essentially the refurbished Nag's Head toilet block. This toilet block dates to the 1980s. There was an older toilet block set further back behind a distinctive wall.



Top – 55 Station Street in August 2023

Middle right – aerial photo of Nag's Head in 1986 showing the toilet block being built.

This image is from the My Trail website and is credited to Kirkby Heritage Centre

Above - montage of photos showing current Lighthouse building (left), the toilet block that was converted (left centre), an earlier toilet block (right centre) and before there were toilets (right). For photo credits, see [website](#).

More details are available on the Drew Family Diaries website <https://drewfamily.uk/> including a PDF version of this booklet. There is an overall [description](#) of the walk, [accounts](#) of individual buildings and sets of [narrated photos](#)

Printed copies of this booklet can be obtained from Kirkby Heritage Centre at 13 Kingsway, Kirkby in Ashfield

The Nag's Head

Like Challans, the Nag's Head is not only a feature of Station Street now but it was during the second world war and well before that. It seems to date back to the 19th century and may well have been the pub that was built before the development of East Kirkby, leading to that area being known as Kirkby Folly.



Landlords (dates approximate)

John Tomlinson: 1841-1851
Betsy Martin: 1901
Arthur J Martin: 1912
Arthur and Hannah Stirland: 1920
Alfred Smith: 1928
Jacob Hibbert: 1935-1941
Sam Collidge: 1940s
William Penny: 1957 and 1960s
Allan and Muriel Leeson: 1960s
Doris Moore: 1970s
Fred and Vi Walker: 70s and 80s
Penny Reeves: 1987-1992
David Oldfield: 1990s



Top – Nag's Head in August 2023 Above – list of Nag's Head landlords
Middle right – earliest photo of the Nag's Head from Kirkby Heritage Centre
Above right – photo in Nag's Head in the fifties Kirkby Heritage Centre

More details are available on the Drew Family Diaries website <https://drewfamily.uk/> including a PDF version of this booklet. There is an overall [description](#) of the walk, [accounts](#) of individual buildings and sets of [narrated photos](#)

Printed copies of this booklet can be obtained from Kirkby Heritage Centre at 13 Kingsway, Kirkby in Ashfield

Three-Sided Clock

One of the most distinctive features of this end of Station Street now is the three-sided clock outside the Nag's Head. This was first unveiled in April 1960. The Nag's Head gave the piece of land, Kirkby Urban and District Council supplied the plinth and Kirkby in Ashfield Chamber of Trade bought the clock.

Many community members and residents have strong memories of the clock. After a period of absence from 2013, the clock was restored to its place outside the Nag's Head in 2019 following a campaign led by Kirkby Heritage Centre.



Above – photo of original unveiling of Nag's Head clock in 1960 . Source KLM
Right – Nag's Head clock in August 2023
Far right – unveiling of renovated clock in 2019. Source AOCHE



More details are available on the Drew Family Diaries website <https://drewfamily.uk/> including a PDF version of this booklet. There is an overall [description](#) of the walk, [accounts](#) of individual buildings and sets of [narrated photos](#)

Printed copies of this booklet can be obtained from Kirkby Heritage Centre at 13 Kingsway, Kirkby in Ashfield

Four Lane Ends

The crossroads where Station Street ends and Diamond Avenue starts are known locally as Four Lane Ends. Lowmoor Road, now pedestrianised, goes off to the left and Kingsway to the right. In his diary, my grandfather often referred to these crossroads as Four Roads End. Traffic lights were installed here in 1959.



More details are available on the Drew Family Diaries website <https://drewfamily.uk/> including a PDF version of this booklet. There is an overall [description](#) of the walk, [accounts](#) of individual buildings and sets of [narrated photos](#)

Printed copies of this booklet can be obtained from Kirkby Heritage Centre at 13 Kingsway, Kirkby in Ashfield

Lowmoor Road

The road to the left of Station Street at Four Lane Ends is Lowmoor, or Low Moor, Road. This area of Kirkby has perhaps changed the most. The lower end of Lowmoor Road has been pedestrianised. The streets to the north west, Byron Street, Prospect Street and Unity Street, were demolished when the precinct was built.

Lowmoor Road was a vibrant shopping street. Also, the church my family attended, Bourne (Primitive) Methodist Church was along here on the corner with Prospect Street. Also, along Lowmoor Road was Kikrby (Summit) Colliery and the colliery rows, including Alexandra Street, where my father's family lived.



Top left – Lowmoor Road in the sixties. Source KLM

Above left – postcard showing Summit Colliery

Above – the outside of Bourne chapel in 1959

Left – 29 Alexandra Street in August 2023. My father lived here with his family.

More details are available on the Drew Family Diaries website <https://drewfamily.uk/> including a PDF version of this booklet. There is an overall [description](#) of the walk, [accounts](#) of individual buildings and sets of [narrated photos](#)

Printed copies of this booklet can be obtained from Kirkby Heritage Centre at 13 Kingsway, Kirkby in Ashfield

Diamond Avenue

The continuation of Station Street across Four Lane Ends, Diamond Avenue was apparently named after Queen Victoria's Diamond Jubilee in 1897. It was/is known locally as Forest Hill.

My family had some involvement with Trinity Methodist Church after its formation from the merger of Bourne and what had been the Wesleyan Chapel on Diamond Avenue.



Diamond Avenue has some importance to me personally. Not only did my family live at 160-164 Diamond Avenue for some years but, in 1960, I was born at Number 41.

Above – Trinity Methodist Church in June 1959
Right – 41 Diamond Avenue in August 2023. I was born here in 1960



More details are available on the Drew Family Diaries website <https://drewfamily.uk/> including a PDF version of this booklet. There is an overall [description](#) of the walk, [accounts](#) of individual buildings and sets of [narrated photos](#)

Printed copies of this booklet can be obtained from Kirkby Heritage Centre at 13 Kingsway, Kirkby in Ashfield

The Regent

On the corner of Diamond Avenue and Kingsway is a building that was until recently The Regent, a Wetherspoon's pub. However, this closed in June 2024. Originally, from the 1930s, this was the Regent cinema. The Regent cinema had two incarnations, first from 1930 until 1961 and then, in the former circle only, from 1998 to 1993. At other times it operated as a cinema under the name of Essoldo, as an Essoldo bingo club, as a Cineplex cinema, as Henry's bar, as Fagin's night club and as Silverline bingo.



Cinemas in Kirkby

From 1914 until 1958, the Star operated at 40 Kingsway. After closure, it was used for storage and then demolished. It was located where McColl's garage is now.

From 1912 to 1961, Kings Palace operated at 1-4 Urban Road. The building was later demolished. The site is currently part of Aldi's car park.

While it is commonly stated that Kirkby had three cinemas, early maps show a cinema on Unity Street around the time of the first world war. Apparently, this was called the Kirkby Electric Picturedrome and it closed in 1912.



Top left – The Regent cinema in 1932 – image licensed from Inspire
Top right – the Regent kiosk. Source KLM
Above – advert for the Regent from 1933 supplied by Trevor Lee

More details are available on the Drew Family Diaries website <https://drewfamily.uk/> including a PDF version of this booklet. There is an overall [description](#) of the walk, [accounts](#) of individual buildings and sets of [narrated photos](#)

Printed copies of this booklet can be obtained from Kirkby Heritage Centre at 13 Kingsway, Kirkby in Ashfield

Kingsway

Now, the road off to the right from Station Street at Four Lane Ends is Kingsway. Originally, apparently, this was a continuation of Lowmoor Road. For a short period, around 1911, it was known as Cemetery Road. But, it was named Kingsway following a visit to Kirkby by King George V in 1914.

Today, Kirkby Heritage Centre is located at 13 Kingsway. Kingsway is also home to two cemeteries, Kingsway old and new.



Above – The same postcard labelled as King’s Way and Cemetery Road. The latter image is from KLM

Above right top – images of Kirkby Heritage Centre. Source KLM

Above right – my father at his grandparents’ grave in Kingsway Old Cemetery in 2010

More details are available on the Drew Family Diaries website <https://drewfamily.uk/> including a PDF version of this booklet. There is an overall [description](#) of the walk, [accounts](#) of individual buildings and sets of [narrated photos](#)

Printed copies of this booklet can be obtained from Kirkby Heritage Centre at 13 Kingsway, Kirkby in Ashfield

88-90 Station Street

This building is on the corner of Kingsway and Station Street and forms part of a terrace that runs to Morley Street. Now, the convenience store, Daily, is there and has been since at least August 2021. Before that, the premises were empty for a period. Byard Enterprises were going to open it as Department Store One but it seems that never happened.

The building is best known as the home of Barclays Bank and the premises are known as Bank House. In 1914, the United Counties Bank moved to “*more commodious premises*” at 90-92 Station Street, presumably this building or part of it although there currently seem to be no 92 Station Street. In 1912, the River Plate Fresh Meat Company was listed at 88 Station Street and Frank Kilner as a newsagent and tobacconist at 92 Station Street. In 1916, United Counties Bank was acquired by Barclays.



More details are available on the Drew Family Diaries website <https://drewfamily.uk/> including a PDF version of this booklet. There is an overall [description](#) of the walk, [accounts](#) of individual buildings and sets of [narrated photos](#)

Printed copies of this booklet can be obtained from Kirkby Heritage Centre at 13 Kingsway, Kirkby in Ashfield

84-86 Station Street



The Dog House at 84-86 Station Street in August 2023

The first property in the terraced row after Bank House is now the pub, the Dog House. This occupies 84-86 Station Street. It has been there since at least September 2017. Prior to that, the premises housed the florist The Fruit Bowl. This was run originally by artist Bill Makinson and his wife. Later owners included Jean and Brian Barnett and Paul and Trish Curran.

At the time of the second world war, 86 Station Street hosted Home and Colonial Stores while Frank Wakefield's general stores were at number 84. Earlier, there had been at least two bakers at 84 Station Street, John Robert Parker, in 1928, and Walter Beaumont, in 1912. In 1912, Shepherds Limited were a provisions dealer at number 86.

Edith Searson identified George and Bertha Wilmot as bakers here. Later, the premises housed a greengrocers which was initially run by George Stafford and then by the Searsons themselves. Facebook contributors identified that there was a small tobacconist's/sweet shop between the Fruit Bowl and the bank called The Top Shop.



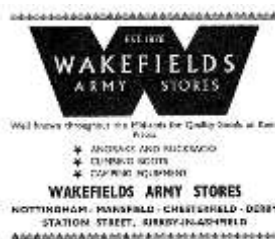
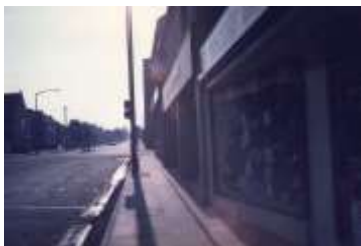
Far left – 84-86 Station Street as The Fruit Bowl in 2014. Source AOCHE
Left – advert for The Fruit Bowl from a 1959 concert programme

More details are available on the Drew Family Diaries website <https://drewfamily.uk/> including a PDF version of this booklet. There is an overall [description](#) of the walk, [accounts](#) of individual buildings and sets of [narrated photos](#)

Printed copies of this booklet can be obtained from Kirkby Heritage Centre at 13 Kingsway, Kirkby in Ashfield

82 Station Street

The estate agent Your Move is at 82 Station Street. They have been there since at least April 2011. Prior to that, Halifax Building Society were there. Other occupants of these premises have included Leisurefield and Wakefield Army Stores. Prior to the second world war, a haberdasher, Herbert Thompson Smith, was based here.



Top – Your Move at 82 Station Street in August 2023
Above left – Halifax circa 2009 . Source KLM
Above – 1969 advert for Wakefields Army Stores
Left – Wakefields Army Stores on Station Street . Source KIAP

More details are available on the Drew Family Diaries website <https://drewfamily.uk/> including a PDF version of this booklet. There is an overall [description](#) of the walk, [accounts](#) of individual buildings and sets of [narrated photos](#)

Printed copies of this booklet can be obtained from Kirkby Heritage Centre at 13 Kingsway, Kirkby in Ashfield

78-80 Station Street

Although Kirkby Sales and Exchange's address is 80 Station Street, they occupy what was number 78 also. They have been at these premises since November 2015 at least. Previously, the solicitors Fidler and Pepper were based here. Jean Bolter ran a clothes shop here.



Above – 1886 is inscribed on front wall of 80 Station Street

The building appears to have been built in 1886. At least, there is a plaque with that date on the wall of number 80.

At the time of the second world war, 78 Station Street was occupied by Reginal Edwards' Leisure Hour library. Earlier, the tobacconist W Heath and Sons were based here. In 1928, James Tuttle had a greengrocer's at number 80.



Above left – 80 Station Street in August 2023

Above right – 2013 advert for Fidler and Pepper. Source AOCHE

Passageway to Snooker Hall

I am grateful to Frank Ball for pointing out that originally there was a passageway to billiard rooms between numbers 78 and 80. This appears to date back to when W Heath and Sons had a tobacconist at 78 Station Street as they also ran billiard rooms in Kingsley Street.



Photo of Station Street circa 1939 showing passage to billiard rooms

Reg Edwards

Reg Edwards was good friends with my grandfather, Gordon Parkin, who ran the shoe shop next door. Grandad bought various things from him including, in 1960, a copy of the then controversial book "*Lady Chatterley's Lover*". When grandad moved to Norfolk, Reg Edwards managed the properties he still owned in Kirkby.



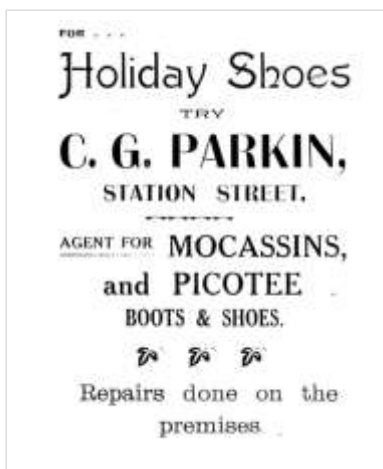
More details are available on the Drew Family Diaries website <https://drewfamily.uk/> including a PDF version of this booklet. There is an overall [description](#) of the walk, [accounts](#) of individual buildings and sets of [narrated photos](#)

Printed copies of this booklet can be obtained from Kirkby Heritage Centre at 13 Kingsway, Kirkby in Ashfield

70-76 Station Street

These premises are important to me as they are where my grandad, Gordon Parkin, had his shoe shop. The business was started by his father, Henry Parkin, some time after the family moved to Kirkby in 1897. Initially, the business was run in a wooden hut on the corner of Portland Street and Lowmoor Road later moving to these premises. From 1920, grandad gradually took over the business with his two brothers, Len and Cyril. Ultimately, both

brothers left so, by 1933, grandad was running it on his own. Not only were these premises used for business purposes but various family members lived in them for many years.



Top – 1935 advert for my grandad’s shoe shop: Source AOCHE

Above – photo of my grandad’s shop circa 1939

More details are available on the Drew Family Diaries website <https://drewfamily.uk/> including a PDF version of this booklet. There is an overall [description](#) of the walk, [accounts](#) of individual buildings and sets of [narrated photos](#)

Printed copies of this booklet can be obtained from Kirkby Heritage Centre at 13 Kingsway, Kirkby in Ashfield



In the late 1950s, grandad retired. He sold the business to Fred Flint in January 1958 who then sold it to Gordon Sugg in 1963.

I am not sure if grandad owned these premises but I think he may have rented them from the Greens. At some point, the Greens lived on the premises too. Also, Edith Green ran a hairdressing business from number 70. This was known as Madam or Madame May and is well-remembered locally.

Now, the premises are occupied by the bridal shop Create Your Day and the café Coffee N Cream. Previous occupants include travel agents, the Booking Centre, hair salon Surreal and clothing shop Simpsons.



Top left – 1969 advert for Gordon Sugg and 1950 advert for Madame May
Above top left – Whit walk passing Madame May. Source KIAP
Above top right – current occupants in 2014. Source AOCHE
Above left – 1988 photo from when premises housed Simpsons. Source KIAP
Above right – later photo of the Booking Centre and Surreal

More details are available on the Drew Family Diaries website <https://drewfamily.uk/> including a PDF version of this booklet. There is an overall [description](#) of the walk, [accounts](#) of individual buildings and sets of [narrated photos](#)

Printed copies of this booklet can be obtained from Kirkby Heritage Centre at 13 Kingsway, Kirkby in Ashfield

68 Station Street

Currently, The Rabbit Hole Tattoo Studio is at 68 Station Street. Chiropodist Your Feet First/Feet First were based there from 2011 to 2021 until they moved to Ashfield Therapy Centre at 49-51 Station Street. In the eighties, health food shop Good Earth was there.

At the time of the second world war, Edith Collingwood, a corset maker and draper was based there. In 1928, Miss Olive Mellor, a confectioner, was there.



Above – photos of Rabbit Hole Tattoo Studios. Source Teresa Heeson and Shayna Marriott

Right – Roger Kirk at the door of his shop Good Earth © Neil Lancashire. Source KLM



More details are available on the Drew Family Diaries website <https://drewfamily.uk/> including a PDF version of this booklet. There is an overall [description](#) of the walk, [accounts](#) of individual buildings and sets of [narrated photos](#)

Printed copies of this booklet can be obtained from Kirkby Heritage Centre at 13 Kingsway, Kirkby in Ashfield

66 Station Street

Tiga Hair Spa is at 66 Station Street. They have been there since at least October 2008. In the seventies and eighties, greengrocers Hemstocks and The Orchard were there.

At the time of the second world war and into the sixties, Ceney's bakery was there. Prior to that, butchers Levi Smith and George H Huskinson were at number 66.



Top right – close up of Tiga Hair Spa at 66 Station Street in August 2023

Above – 1969 photo of Station Street with W H Ceney at the extreme left. Source AOCHE

Left – W H Ceney advert from 1935 Carnival programme. Source KLM

More details are available on the Drew Family Diaries website <https://drewfamily.uk/> including a PDF version of this booklet. There is an overall [description](#) of the walk, [accounts](#) of individual buildings and sets of [narrated photos](#)

Printed copies of this booklet can be obtained from Kirkby Heritage Centre at 13 Kingsway, Kirkby in Ashfield

62-64 Station Street

Currently, My Dentist and taxi company 6 Five 2s are at 62-64 Station Street. My Dentist appears to occupy the first floor of number 62 in addition to both floors of number 64. My Dentist have been there since at least November 2015. Prior to that, it was Station Street Dental Centre and, before that, another dentist, Mr Bell, was there. 6 Five 2s have been there since at least March 2019. Before that, it was Kingsway Shoe Repairer. In the eighties, estate agents, valuers and auctioneers Booth and Coupe were at number 62. Other shops in these premises included the Bramwells' tobacconist and Brian Soar's general stores. Mrs Penny, who ran the Nag's Head with her husband, had a Jaeger shop there, see photo on previous page.

Before the second world war, Joseph Waite was a greengrocer at number 64. At the time of the war, George Unwin was a herbalist at number 62 and Edgar Coates was listed as a confectioner at 62a. It seems that, in addition to his clothes shop, Edgar Coates ran a sweet shop which later operated as Quick Service, see photo on previous page, which was managed by Jack Knight. In 1928, Edward A Holland, an electrical engineer, was at number 62a.



Left – 62-64 Station Street in August 2023
Below left – 1955 advert for Unwin's.
Source Trevor Lee
Below centre – Unwin's. Source Kirkby Heritage Centre
Below right – 62 Station Street as shoe repairer. Source AOCHE



More details are available on the Drew Family Diaries website <https://drewfamily.uk/> including a PDF version of this booklet. There is an overall [description](#) of the walk, [accounts](#) of individual buildings and sets of [narrated photos](#)

Printed copies of this booklet can be obtained from Kirkby Heritage Centre at 13 Kingsway, Kirkby in Ashfield

Morley Street

Morley Street is a short street that runs from Station Street to where it turns ninety degrees left to become Kingsley Street. Currently, it is one-way towards Station Street. The former Salvation Army buildings are there. They currently house a swimming pool and swimming school.



Top – former Salvation Army buildings © Dave Bevis licensed for re-use under a Creative Commons Licence – with swimming pool inset. Source Nick Martin
Above - Salvation Army in action in pictures. Sources Kathryn Chapman (left) and Donna Lancashire (centre and right)

More details are available on the Drew Family Diaries website <https://drewfamily.uk/> including a PDF version of this booklet. There is an overall [description](#) of the walk, [accounts](#) of individual buildings and sets of [narrated photos](#)

Printed copies of this booklet can be obtained from Kirkby Heritage Centre at 13 Kingsway, Kirkby in Ashfield

60 Station Street

Currently, Leisure Time Slots are at 60 Station Street. The Tanning Centre is upstairs and this stretches across to number 58 also. They have both been there since at least October 2008 although, prior to 2021, the former business was just known as Leisure Time.

At the time of the second world war, into the eighties and for a long-time previously, these premises were occupied by a grocer, Edward Wilbourn. His business also occupied 58 Station Street. Before the tanning centre occupied upstairs, there was a hairdressers called Headstart.



Above – Leisure Time Slots and The Tanning Centre at 60 Station Street in August 2023
Right – 1976 advert and photo for Wilbourn's. Source KIAP

For the discriminating palate

Many people remember Wilbourn's. Mark Ashfield considered it was for the discriminating palate, offering excellence in food and wines. Frank Ball considered it the best-stocked grocer's in Kirkby. Others noted that it was "*posh*" and a place to get fine wines.

Harold Redfin

On a personal note, my father's maternal uncle, Harold Redfin worked for Wilbourn's carrying out deliveries. He was remembered by Edith Searson not least because he suddenly died in 1956 when making deliveries. He was 53.



More details are available on the Drew Family Diaries website <https://drewfamily.uk/> including a PDF version of this booklet. There is an overall [description](#) of the walk, [accounts](#) of individual buildings and sets of [narrated photos](#)

Printed copies of this booklet can be obtained from Kirkby Heritage Centre at 13 Kingsway, Kirkby in Ashfield

58 Station Street

King Barber currently occupies 58 Station Street having been there since at least March 2022. Previously, there were a number of food outlets there including Big Belly Deli, Rob's Rolls, Kings Rolls and Yummy's. Other businesses which have been at this location include Krackers. However, for a long period, it was part of Wilbourn's along with number 60.



Left – King Barber at 58 Station Street in August 2023

Below – In November 2021, when changing the sign at 58 Station Street, the old Yummy's sign was visible. Apparently it had not been seen for many years. Source Alwyn Bowskill



Photo of Rob's Rolls at 58 Station Street. Source AOCHE

More details are available on the Drew Family Diaries website <https://drewfamily.uk/> including a PDF version of this booklet. There is an overall [description](#) of the walk, [accounts](#) of individual buildings and sets of [narrated photos](#)

Printed copies of this booklet can be obtained from Kirkby Heritage Centre at 13 Kingsway, Kirkby in Ashfield

56 Station Street

Kirkby Gold Centre is currently at 56 Station Street and has been there since at least June 2015. Prior to that, it was the Salvation Army Care and Share Shop, F&S Garments Ltd and Chiltons Wool Shop, later Bernice. In the sixties, Mr Chilton operated a chirpoddist's business from the back of the wool shop.

At the time of the second world war, a baker, Wilfred Howis was here. Before that, butchers Edwin Marriott and Thomas Haslam occupied these premises.



Kirkby Gold Centre at 56 Station Street in August 2023

Advert for Chiltons from 1959 concert programme

FOR KNITTING WOOL
AND ACCESSORIES

CHILTONS

56, STATION STREET,
KIRKBY-IN-ASHFIELD

Agents for—

Sirdar, Viyella
Bairnswear,
Johnny, Robin,
Duchy Nylons and
Munrospun

More details are available on the Drew Family Diaries website <https://drewfamily.uk/> including a PDF version of this booklet. There is an overall [description](#) of the walk, [accounts](#) of individual buildings and sets of [narrated photos](#)

Printed copies of this booklet can be obtained from Kirkby Heritage Centre at 13 Kingsway, Kirkby in Ashfield

54 Station Street

Charity shop, The Crossing, is at 54 Station Street and has been there since at least June 2015. Previous shops have included MG House Clearance and the accountant, R C Ravensdale.

At the time of the second world war, Modern Way libraries were here. Before that, the premises were occupied by John Henry Pask, a hairdresser and John J Holmes, a confectioner. Modern Way libraries is one of three shops featured in Mark Ashfield's book "*A Carnival Crown and a Roasted Ox*". The library was owned by Max, and then John, Bridges.

In 1911, one of the residents of 54 Station Street was bricklayer Ernest Edward Sidy. He was killed in an accident involving a plane practising take off and landing in October 1917.

The Crossing at 54
Station Street in
August 2023



More details are available on the Drew Family Diaries website <https://drewfamily.uk/> including a PDF version of this booklet. There is an overall [description](#) of the walk, [accounts](#) of individual buildings and sets of [narrated photos](#)

Printed copies of this booklet can be obtained from Kirkby Heritage Centre at 13 Kingsway, Kirkby in Ashfield

52 Station Street

Ashfield Dry Cleaners are at 52 Station Street having previously been on the corner of Station Street and Ellis Street. They have been here since at least April 2017. Previously, the estate agents Location were here. Barry and Shirley Calladine used the premises as a greengrocers as Barry's and Shirl's Fruit Shop respectively. After them, Michael Griffiths ran his business MG House Clearance from here.

At the time of the second world war, the premises were also run as a greengrocer's by Clement Chilton who later worked as a chirpodist from his wife's wool shop at 56 Station Street. Even earlier than this, from at least 1899 to 1911, Thomas Key was a greengrocer at number 52. However, it was not a greengrocer's continuously as, in 1928, number 52 was home to jeweller Edward Parry.



Left – Ashfield Dry Cleaners at 52 Station Street in August 2023

Right – Location at 52 Station Street. Source AOCHE

More details are available on the Drew Family Diaries website <https://drewfamily.uk/> including a PDF version of this booklet. There is an overall [description](#) of the walk, [accounts](#) of individual buildings and sets of [narrated photos](#)

Printed copies of this booklet can be obtained from Kirkby Heritage Centre at 13 Kingsway, Kirkby in Ashfield

50 Station Street

The last property in the terraced row before Tennyson Street, it is currently occupied by funeral directors A Wass who have been here since at least September 2017. Before that, Christian book store, the Ark and a community contact point operated by Kirkby Neighbourhood Management were here.



A Wass Funeral Directors. Source AOCHE



P E Bray advert 1976.
Source KIAP

For many years, P E Bray's china shop was here. The business was started by Philip Edward and Elizabeth Bray on Lowmoor Road. Forty years later it relocated to Station Street. The shop was then managed by Philip's daughter, Betty, and her son, Reg, before being sold. Many people living in Kirkby recall this shop.

Earlier. It may have been a grocery shop called The Corner Shop. At the time of the second world war, it was run by a grocer, Fred Hutton. Fred was a friend of my grandfather's who appears in his diaries.



Huttons advert 1933: Source Trevor Lee

More details are available on the Drew Family Diaries website <https://drewfamily.uk/> including a PDF version of this booklet. There is an overall [description](#) of the walk, [accounts](#) of individual buildings and sets of [narrated photos](#)

Printed copies of this booklet can be obtained from Kirkby Heritage Centre at 13 Kingsway, Kirkby in Ashfield

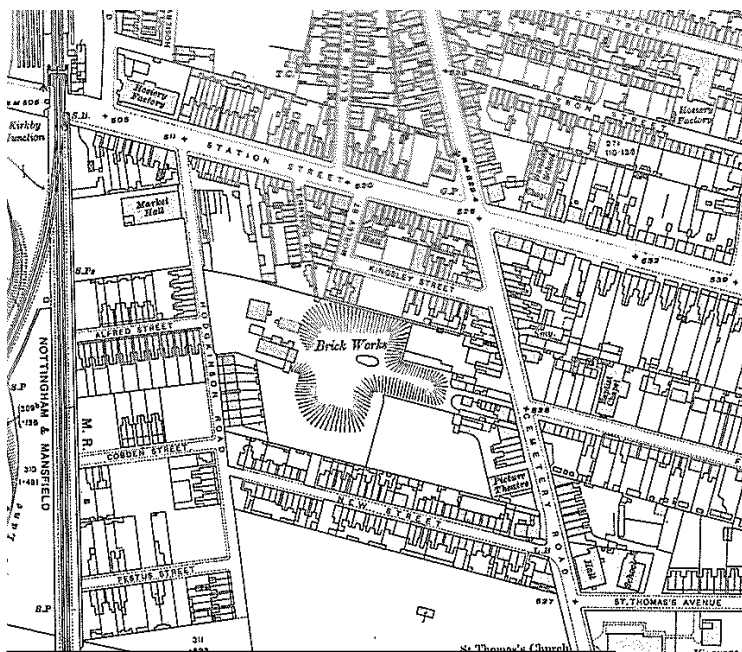
Tennyson Street

Tennyson Street is a short street which runs from Station Street to Kirkby College, now Outwood Academy. Along the way, it runs between the Acre Centre for Young People and Hodgkinson Road car park.

Previously, D K and P Tomlinson had a wood yard and joinery business on Tennyson Street. The street itself led to an old brick works before the school was built.

George Alcock

Tennyson Street is not mentioned specifically in my family's diaries. However, in October 1918, grandad noted that "boy aged 6 years got his head cut off at the wakes". Although initially sceptical I looked into this and confirmed that this had happened as described. It appears that the accident happened when boys were trying to get onto a ride without payment. The boy was George Alcock. He lived at 12 Tennyson Street.



1914 map showing Tennyson Street leading to the old brick works

More details are available on the Drew Family Diaries website <https://drewfamily.uk/> including a PDF version of this booklet. There is an overall [description](#) of the walk, [accounts](#) of individual buildings and sets of [narrated photos](#)

Printed copies of this booklet can be obtained from Kirkby Heritage Centre at 13 Kingsway, Kirkby in Ashfield

48 Station Street

From Tennyson Street to Hodgkinson Road, there is first a row of terraced shops and then a row of shops within a square, more modern-looking building. The first shop in the terraced row is 48 Station Street, occupied by Mansfield Building Society. They have been there since at least 2008. Previously, washing machine and cleaner retailers and suppliers Kirkbys were here. There was also a sports and fishing shop here.



Terraced row from Tennyson Street in August 2023. Mansfield Building Society at extreme left. 1971 Advert for Kirkbys [inset](#). Source KLM

At the time of the second world war, number 48 was grocer Marsden's. It had previously been the Post Office, run by James (Jim) Toon Bailey. He was William Henry Wightman's step-son. While there are different views about what the first supermarket in Kirkby was, Marsdens introduced self-service features in the early sixties. It later operated under the name of Vernon's.



1966 photo of Vernon's Price Down at 48 Station Street. Source KLM

More details are available on the Drew Family Diaries website <https://drewfamily.uk/> including a PDF version of this booklet. There is an overall [description](#) of the walk, [accounts](#) of individual buildings and sets of [narrated photos](#)

Printed copies of this booklet can be obtained from Kirkby Heritage Centre at 13 Kingsway, Kirkby in Ashfield

44-46 Station Street

Although estate agent, David Blount, has the address of 44 Station Street, it appears that they occupy what was number 46 also. They have been there since at least October 2008. Earlier, it had been the Co-op and also an antiques shop run by R B Wilson.

At the time of the second world war, Edwin Marriott was a butcher at number 44 having previously moved from 56 Station Street. Earlier, confectioner John Blythe was based here.



Above – David Blount at 44 Station Street in August 2023

Left – terraced row in 2016. Source AOCHE. Red arrow shows step in roof which indicates that the shop was originally two premises, numbers 44 and 46

More details are available on the Drew Family Diaries website <https://drewfamily.uk/> including a PDF version of this booklet. There is an overall [description](#) of the walk, [accounts](#) of individual buildings and sets of [narrated photos](#)

Printed copies of this booklet can be obtained from Kirkby Heritage Centre at 13 Kingsway, Kirkby in Ashfield

42 Station Street

42 Station Street seems to be empty currently. Floral Expressions had been there since at least October 2008 but they have now permanently closed. It is possible that Co-op had a pharmacy here.

Previously, this was where electrical business C Kalynycz was located. The business was originally on Ellis Street before moving here. The business was run by Heather Mulholland's parents. It was actually registered in her mother's name as her father was a displaced person from Ukraine but it was not possible for a "foreign alien" to own a business at that time.



Floral Expressions at 42 Station Street in August 2023

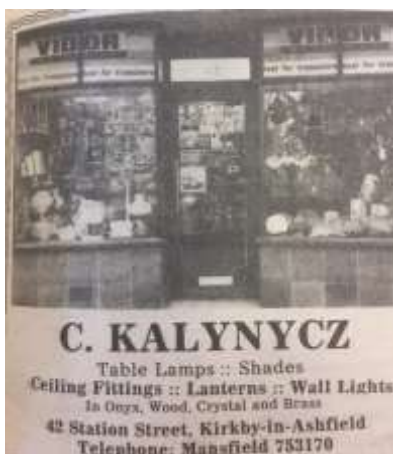


Photo and advert for C Kalynycz from the Free Press in March 1976. Source KIAP

More details are available on the Drew Family Diaries website <https://drewfamily.uk/> including a PDF version of this booklet. There is an overall [description](#) of the walk, [accounts](#) of individual buildings and sets of [narrated photos](#)

Printed copies of this booklet can be obtained from Kirkby Heritage Centre at 13 Kingsway, Kirkby in Ashfield

40 Station Street

Opticians D I Blow are based at 40 Station Street and have been since the mid-nineties. Previous occupants included the solicitors, Shacklocks and W A Raine.



At the time of the second world war, wheelwrights George Bowmar and Sons were based here. They had been there since at least 1912. The Bowmars were good friends of my grandparents and are mentioned frequently in my grandad's diaries. They were also undertakers.

Above – D I Blow at 40 Station Street in August 2023

Right – 1935 advert for Bowmars. Source AOCHE



More details are available on the Drew Family Diaries website <https://drewfamily.uk/> including a PDF version of this booklet. There is an overall [description](#) of the walk, [accounts](#) of individual buildings and sets of [narrated photos](#)

Printed copies of this booklet can be obtained from Kirkby Heritage Centre at 13 Kingsway, Kirkby in Ashfield

36 Station Street

The first business in the more modern block is the hair salon, Cult. It has not been there long as number 36 was empty and available for rent in March 2022. Other businesses which have been there include the tattoo removal salon, Never Forever Nottinghamshire, the pet grooming service Kutz for Muttz, Mobility, Kirkby Cycle Centre, nurseryware supplier Baby and Toddler, Krackers, estate agents Colin Edwards and Hills Furnishers. At the time of the second world war, 36 Station Street was a residential building.



Top - composite image which shows the relatively modern-looking run of houses from 24 to 36 Station Street from photographs taken in August 2023. Cult is shown at number 36

Above – all the buildings on the right between Hodgkinson Road and 40 Station Street/D I Blow have been demolished. Source KIAP

More details are available on the Drew Family Diaries website <https://drewfamily.uk/> including a PDF version of this booklet. There is an overall [description](#) of the walk, [accounts](#) of individual buildings and sets of [narrated photos](#)

Printed copies of this booklet can be obtained from Kirkby Heritage Centre at 13 Kingsway, Kirkby in Ashfield

34 Station Street

34 Station Street is occupied by Lucky Star Chinese Takeaway which has been there since at least October 2008. Earlier, the chartered surveyors, auctioneers, valuers and land and estate agents, Walker Walton Hanson were here.



Above – Lucky Star Chinese takeaway at 34 Station Street in August 2023
Left – these documents were shared by Alwyn Bowskill illustrating that, when he bought a house in the nineties, he was able to get all services he needed on Station Street. The letterhead for Walker Walton Hanson shows they were at 34 Station Street

More details are available on the Drew Family Diaries website <https://drewfamily.uk/> including a PDF version of this booklet. There is an overall [description](#) of the walk, [accounts](#) of individual buildings and sets of [narrated photos](#)

Printed copies of this booklet can be obtained from Kirkby Heritage Centre at 13 Kingsway, Kirkby in Ashfield

32 Station Street

Currently, the estate agents, Bairstow Eves, are based at 32 Station Street. They have been there since at least October 2008. Previous occupants included a video, TV and hi-fi service and repair company Vision Art Associates, a computer centre Micro Vision and fashion boutique Carnaby Girl, which was opened by the radio DJ Emperor Roskow. In 1921, Tom Scothern was living at 32 Station Street and, in 1928, he was listed as a coal carter there.



Top – Bairstow Eves at 32 Station Street in August 2023

Above – 1984 advert for Vision Art Associates. Source Find My Past

Right – 1984 advert and feature for Microvision. Source Find My Past



More details are available on the Drew Family Diaries website <https://drewfamily.uk/> including a PDF version of this booklet. There is an overall [description](#) of the walk, [accounts](#) of individual buildings and sets of [narrated photos](#)

Printed copies of this booklet can be obtained from Kirkby Heritage Centre at 13 Kingsway, Kirkby in Ashfield

28-30 Station Street

Currently, 28-30 Station Street are owned by a mother and daughter. The tearoom Through the Looking Glass is at number 30 and Chic Boutique is at 28. They have been there since 2019. Before that, the premises housed the Tea Room, Kirkby Beds, furniture store Bonkers and Taylors Corn Stores.

Through the Looking Glass and Chic Boutique at 28-30 Station Street in 2019. Source AOCHE



	<table><tr><td>Five Beds</td><td>from 965</td></tr><tr><td>Metal Beds</td><td>from 619</td></tr><tr><td>Drawn</td><td>from 449</td></tr><tr><td>Book Beds</td><td>from 679</td></tr><tr><td>Mattresses all sizes</td><td>from 120</td></tr></table> <p>Also available range of Furniture, Carpets and accessories.</p> <p>Finance available Major Credit Cards Accepted</p>	Five Beds	from 965	Metal Beds	from 619	Drawn	from 449	Book Beds	from 679	Mattresses all sizes	from 120	
Five Beds	from 965											
Metal Beds	from 619											
Drawn	from 449											
Book Beds	from 679											
Mattresses all sizes	from 120											

Far left – 2013 advert for Kirkby Beds. Source AOCHE
Left – Taylors in background of Whit Walks. Source KLM

At the time of the second world war, John Chantry was living here. As was relatively common, he used his house as a store. In his case, he sold hardware. He also worked as a blacksmith on Factory Road.

More details are available on the Drew Family Diaries website <https://drewfamily.uk/> including a PDF version of this booklet. There is an overall [description](#) of the walk, [accounts](#) of individual buildings and sets of [narrated photos](#)

Printed copies of this booklet can be obtained from Kirkby Heritage Centre at 13 Kingsway, Kirkby in Ashfield

24-26 Station Street

Currently, Kirkby Dental Practice are at 24-26 Station Street but they have not been there long. Prior to that, it was a children's play centre under various names including Rainydays Play Centre, Happy Days Play Den and BJ's Playzone.



Left – Kirkby Dental Practice. Source AOCHE
Right – Rainydays Play Centre. Source AOCHE

When the new building was first built, in the late sixties, it housed supermarket D R Cresswell. It later became a snooker and social club, Breakers.



Left – Opening of Cresswell's. Source KIAP Right – Breakers Source KLM

When the old cottages were still in place, Fasey's fish and chip shop was on the corner of Station Street and Hodgkinson Road. Mark Ashfield describes this as a "*corrugated iron lean-to*". Apparently, it was operated by the Ringroses before being taken on by the Faseys. The chip shop later moved to 6 Station Street following a fire at this location.

More details are available on the Drew Family Diaries website <https://drewfamily.uk/> including a PDF version of this booklet. There is an overall [description](#) of the walk, [accounts](#) of individual buildings and sets of [narrated photos](#)

Printed copies of this booklet can be obtained from Kirkby Heritage Centre at 13 Kingsway, Kirkby in Ashfield

Hodgkinson Road

Hodgkinson Road runs from Station Street to Kingsway Park. It has several dead-ends coming off it, Alfred Street, Cobden Street and Festus Street. Previously, New Street connected Hodgkinson Road and Kingsway but it is now a dead end from Kingsway only.



Above – Hodgkinson Road late sixties. Source KIAP

Below left – Nan’s Sweet Shop Below centre – Craft Station in 2016: Source AOCHE Below right – Kirkby Old Band in front of Band Hall. Source KIAP

The name refers to Catherine Hodgkinson who sold land to the Council to create Kingsway Park in 1930. The most important building was the now-demolished Market/Festival Hall, see next page. Mrs Nancy Skillington had a sweet and grocery shop on the corner of Hodgkinson Road and Alfred Street, known as Nan’s Sweet Shop. At the time of the second world war, this shop was run by Betty Hensby.

Other buildings on Hodgkinson Road included Craft Station, between the Festival Hall and Station Street, and Kirkby Old Band’s Hall.



More details are available on the Drew Family Diaries website <https://drewfamily.uk/> including a PDF version of this booklet. There is an overall [description](#) of the walk, [accounts](#) of individual buildings and sets of [narrated photos](#)

Market/Festival Hall



Festival Hall from Trevor Lee's Band Call. Source KIAP

Plans to build a market hall for Kirkby were first developed in 1906. Land was purchased in 1909, the building was constructed in 1911 and it opened in 1912. It was used extensively during the first world war and in the inter-war years. During the second world war, the building was requisitioned by the army.

In 1947, the building was badly damaged by fire. It was rebuilt and reopened in September 1950, renamed the Festival Hall in honour of the 1951 Festival of Britain. It was extended in the eighties as the Festival Hall Leisure Centre.



Fire at Market Hall 1947. Source KIAP

A new Leisure Centre was constructed in 2021/22 and the original building was subsequently demolished. Although the building was originally intended for use as a market, it was also widely used for other purposes including political meetings, parties, concerts, dances, boxing and wrestling among other things.

Festival Hall mural Source KIAP



More details are available on the Drew Family Diaries website <https://drewfamily.uk/> including a PDF version of this booklet. There is an overall [description](#) of the walk, [accounts](#) of individual buildings and sets of [narrated photos](#)

Printed copies of this booklet can be obtained from Kirkby Heritage Centre at 13 Kingsway, Kirkby in Ashfield

22 Station Street

Mr Wuffles, who produce and sell home-baked dog treats, are now based at 22 Station Street. Previously, social enterprise Vision 2020 were here. Other previous occupants include New Style Barbers, charity shop Money Makers, boxing promoter John Ashton, Kirkby Cyber Café and off-licence Bottles. These premises are well-known locally as an off-licence or beeroff being operated as such in the sixties by Vin Machin.



22 Station Street as Vision 2020 (top left), New Style Barbers (top right, Source AOCHÉ), Money Makers (above left Source AOCHÉ) and Kirkby Cyber Café (above right Source AOCHÉ)

At the time of the second world war, it was also occupied by beer retailer Edward C Brown. Previously, it was also a beeroff run by William Clarke, described by Mark Ashfield as Cricketer Clarke.



Adverts from the sixties including one for V E Machin. Source Kirkby Heritage Centre

More details are available on the Drew Family Diaries website <https://drewfamily.uk/> including a PDF version of this booklet. There is an overall [description](#) of the walk, [accounts](#) of individual buildings and sets of [narrated photos](#)

Printed copies of this booklet can be obtained from Kirkby Heritage Centre at 13 Kingsway, Kirkby in Ashfield

18-20 Station Street

The Tea Room were based at 18-20 Station Street from at least September 2020. However, following flooding in June 2023, they closed permanently. Previously, the premises were occupied by Norman Daynes Electrical and craft shop Craft 'E Corner, businesses run by the same family. In addition to electrical items, Norman Daynes also sold records and cycle accessories.



Top – The Tea Room in 2020. Source AOCHE
Above – Daynes and Craft 'E Corner. Source Alwyn Bowskill

Memories of Daynes

Many people recall Daynes as the main place to buy records and that they got their first record from there. Examples include T Rex's Metal Guru, David Bowie's Rebel Rebel, Nazareth's Broken Down Angel, Meatloaf's Deadringer, Urban Cookie Collective's The Key The Secret, Jim Reeves' Pamela Pamela, Green Green Grass of Home and Old Tige, The Shadows' Apache, Human League's Sound of the Crowd, T Rex's Ride a White Swan, McCall's Convoy and The Cure's A Forest.

People also recalled that Daynes displayed the latest charts in a little side window. Others commented that you were able to get any record there. If they didn't have it, they would order it for you.



Plastic bag from Daynes. Source Karen Turner

At the time of the second world war, accountants and solicitors, the Alcocks, were based here. The business was started by John Edward Alcock and continued by his sons John Hodson and Edward Roland B Alcock. Representatives of Nottingham Building Society were also in attendance here on Tuesdays.

More details are available on the Drew Family Diaries website <https://drewfamily.uk/> including a PDF version of this booklet. There is an overall [description](#) of the walk, [accounts](#) of individual buildings and sets of [narrated photos](#)

Printed copies of this booklet can be obtained from Kirkby Heritage Centre at 13 Kingsway, Kirkby in Ashfield

8-16 Station Street

8-16 Station Street are currently residential properties leading down to a couple more shops before B&M.



Above – Row of houses on Station Street in August 2023 Below left – Little Red Shop. Source KLM Below right – Geoff Hoon’s office. Source AOCHE

Some of the houses also operated as shops at some point. For example, at the time of the second world war, Arthur Coleman ran a sweet shop at number 16. This was known as The Little Red Shop. Previously, it had been run by confectioners Annie Sears and William Blount. William White was a dentist at number 14 and Edward Lowe was a slater at number 12.

From 2008-2019, number 8 housed offices for Labour MPs Geoff Hoon and Gloria De Piero.



More details are available on the Drew Family Diaries website <https://drewfamily.uk/> including a PDF version of this booklet. There is an overall [description](#) of the walk, [accounts](#) of individual buildings and sets of [narrated photos](#)

Printed copies of this booklet can be obtained from Kirkby Heritage Centre at 13 Kingsway, Kirkby in Ashfield

6 Station Street

Currently, Chinese takeaway Six Foo is based at 6 Station Street and has been there since at least April 2023. Other takeaways have operated from here including Jade, Fortune House and Chick-King. Before that, there was a chip shop run by the Faseys and then the Hutchinsons. The Faseys opened the shop here when their previous shop on the corner of Hodgkinson Road and Station Street burned down. Previous to that, it had been a residential property.



Top left – 4-6 Station Street in August 2023

Top right – close up of Chick-King at 6 Station Street. Source AOCHE

Above left – close up of Fasey's Fish Bar. Source Alwyn Bowskill

Above right – photo showing 4-6 Station Street were residential in the sixties.
Source KLM

More details are available on the Drew Family Diaries website <https://drewfamily.uk/> including a PDF version of this booklet. There is an overall [description](#) of the walk, [accounts](#) of individual buildings and sets of [narrated photos](#)

4 Station Street

Scoffers Sandwich Bar is currently located at 4 Station Street and has been here since at least 2008. Prior to that, it was Pappa Takeaway and Rainbow café. Even earlier, like number 6, it was a residential property. For photos, see previous page.

Jean's over the Rainbow

FOR nearly a decade Jean Clarke's happy, smiling face has greeted customers at the Rainbow Cafe on Station Street. Always ready for a quick chat over a cup of tea, she puts on a cheerful face no matter what the weather or the time.

She enjoys meeting people and spends her time talking to the customers. Living above the shop on the Main Road suits her because she likes to be in the middle of things.

Born in Hucknall, she worked in a bakery and then in a shoe shop. Her introduction to cafes

started when she became an assistant at the Music Box at Hucknall. She liked the work, but later returned to the shoe trade as manageress at a Kirkby shop.

She found the Kirkby people friendly and when the opportunity of becoming manageress of the Rainbow Cafe came up she gladly accepted.

Now, quite happy to carry on after nearly ten years, she enjoys playing bingo and watching television. And, when she gets the time, she likes to take her two dogs for long walks.

Article about Jean Clarke and Rainbow Café which appeared in the Notts Free Press on 2 April 1976. Source AOCHE

Printed copies of this booklet can be obtained from Kirkby Heritage Centre at 13 Kingsway, Kirkby in Ashfield

2 Station Street

There does not seem to be a number 2 Station Street. B&M are located where it might be expected to be but their website gives their address as Lindley's Lane/Station Street. They have been based there since at least March 2019. Previous occupants of those premises include The Original Factory Shop, Haldanes, Somerfield and Kwik Save.



B&M building when it was Haldane's.
Source AOCHE

Prior to the construction of this building, this space housed temporary council offices, a site for a fairground and a garden centre called Plantland.

While it is possible that 2 Station Street was demolished to allow the current B&M building to be constructed, it seems that it was demolished much earlier. At the time of the second world war, butcher Fred Wilson occupied number 2.



Above left – close up of 2 Station Street. Source KLM
Above right – this image from late seventies clearly shows that number 2 had already been demolished. Source Alwyn Bowskill

More details are available on the Drew Family Diaries website <https://drewfamily.uk/> including a PDF version of this booklet. There is an overall [description](#) of the walk, [accounts](#) of individual buildings and sets of [narrated photos](#)

Printed copies of this booklet can be obtained from Kirkby Heritage Centre at 13 Kingsway, Kirkby in Ashfield

Station Street Crossing

Where B&M stands now, there was a level crossing next to East Kirkby Railway Station. Many people in Kirkby have vivid memories of that crossing



Top – merged image of location of Station Street crossing using 2023 photograph and a 1955 image from the Kirkby Heritage Centre
Above – Station Street Crossing. Source Steaming back to Kirkby website

More details are available on the Drew Family Diaries website <https://drewfamily.uk/> including a PDF version of this booklet. There is an overall [description](#) of the walk, [accounts](#) of individual buildings and sets of [narrated photos](#)

Acknowledgements

I am extremely grateful to a wide range of people who supplied information for this booklet. These included lists of shops in Station Street in 1912, 1920-1940 and 1942. Edith Searson and Mark Ashfield published similar walks in their books "*Christmas Pigs and a Summer Donkey*" and "*I Also Remember*" respectively.

Three Facebook groups/pages have been particularly useful as sources of photographs and as platforms to invite comments on the work in progress. These are:

- Annesley OC Heritage Extra Facebook page (credited here as AOCHE)
- Kirkby-in-Ashfield People Facebook Group (credited here as KIAP)
- Kirkby Living Memory Facebook Group (credited here as KLM)

I am particularly grateful to Chris Kidger and Kirkby Heritage Centre. Not only does Chris administer the Kirkby Living Memory Facebook Group but they have been supportive of all aspects of this work including providing access to photos held by the Kirkby Heritage Centre. I am also grateful to Sue Hardy and Christine Evans for their support and for granting access to photos on the Facebook sites they administer.

I would also like to thank Alwyn Bowskill for accompanying me throughout the duration of this project, for supplying photos and expert local, firsthand knowledge that I sadly lack. I am also grateful to the many, many people who provided comments, information and photos through the discussion on Facebook about this booklet.