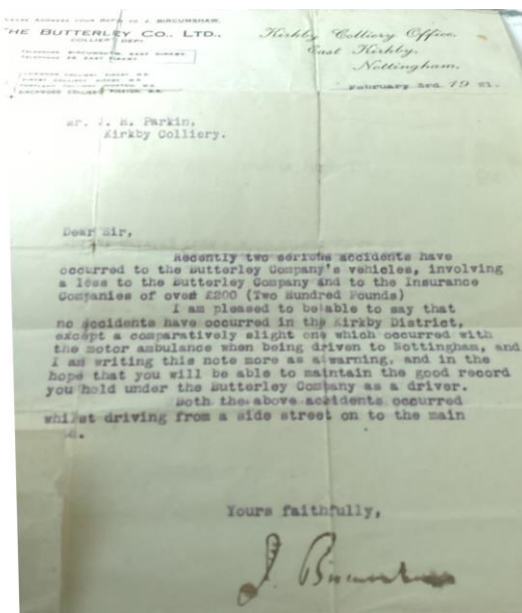


## Chapter 24: Homes

At the start of this period, grandad gives his address as 54 Welbeck Street. It seems, he was living here with some of his family. He was still working at the shop in Station Street. The family had lived there until 1915.<sup>1</sup> According to electoral registers, grandad lived at number 54 with his mother and father from 1921 to 1924.<sup>2 3</sup> This is confirmed by information from the 1921 census which shows that grandad was living at 54 Welbeck Street with his parents, Eva, her husband Arthur and her daughter Olive.<sup>4</sup> According to the census, grandad's oldest brother James was living at 76 Station Street with his wife Annie and their two children, Gordon and Ethel. James was recorded as a motor lorry driver at Kirkby Colliery.<sup>5</sup>

It appears that grandad's father had also owned 52 Welbeck Street<sup>6</sup> and that he sold it in 1919 for £350.<sup>7</sup>



Top right – 54 Welbeck Street in August 2023

Above left - letter from Kirkby Colliery to James Parkin in February 1921 concerning accidents that had occurred. It was kindly provided to me by Sandra Chorley with a number of photos related to the branch of the family that emigrated to Canada, see "[Relatives in Canada](#)".

Above right – 52 and 54 Welbeck Street in August 2023

<sup>1</sup> His elder brother James Henry was still living there with his family.

<sup>2</sup> Arthur Evans was recorded as living with them too but grandad's sister Eva was not recorded on the electoral register. This was because she was not eligible to vote. Between 1918 and 1928, women were only [eligible to vote](#) if they were over 30 and met certain property requirements. As Eva was born in 1895, she would not have been 30 until 1925 whereas Olive turned 30 in 1914.

<sup>3</sup> In addition, John and Olive were living next door at 56. Between 1922 and 1924, Ray, grandma's brother was living there too. I wonder if Winnie was also living there but did not appear on the electoral register as she was born in 1898 so would have only turned 30 in 1928. From 1922 to 1924, there was also a William Smith there. I believe this was John's father.

<sup>4</sup> Eva and Arthur's son Roy is not recorded as the census took place in June and Roy was only born in August 1921.

<sup>5</sup> James and his family emigrated to Canada in 1922.

<sup>6</sup> Initially, I thought 54 was a detached house as the front of the house has only one door. However, it seems that 54 is only the half on the left. The right hand half is 52 and the door is round the side. The number for 52 is just visible behind the drainpipe!

<sup>7</sup> Around [£12,500](#) today. According to [Zoopla](#), this house is currently valued at £137,000. It was sold in 2004 for £85,000. It is listed as a freehold, semi-detached house.



*Above – Map of Kirkby in Ashfield 1969 – numbered circles show approximate location of properties in Station Street (1), Welbeck Street (2), Milton Street (3) and Diamond Avenue (4).*

In 1924, grandad’s brother Len moved to Ollerton<sup>8</sup>. Then, in 1925, grandad noted that “we” moved. However, he did not explain who moved, where they moved or why. As he was still unmarried, I assumed that this move was with his parents. In his diary for 1929, he gave his address as Hilly Mount, Forest Hill, Kirkby in Ashfield. Initially, I struggled to find any such address and wondered if it was some kind of joke about how hilly Kirkby was! However, it turns out that Forest Hill is what locals call(ed) the eastern part of Diamond Avenue.<sup>9</sup> My understanding of this<sup>10</sup> was perhaps confirmed by newspaper cuttings related to grandad’s mother’s death in 1930 which gave her address variously as “Hillymount”, Forest Hill, East Kirkby and Hill Mount, Diamond Avenue, East Kirkby. Based on electoral registers for 1925, he and his parents were living at 158 Diamond Avenue with Arthur and Eva living at 160 and John and Olive at 162.<sup>11</sup>

The numbering of these houses threw me a bit as grandad later owned 158, 160 and 162 Victoria Road. So, I wondered if these were those houses given that Victoria Road and Diamond Avenue are essentially a continuation of each other. But, the material about Forest Hill contradicts this as that indicates the eastern part of Diamond Avenue and Victoria Road is to the west. One thing I noted was the house numbers ended at 162 and the house between 150 and 154 was called “The Gables”. I had a look at the possible houses on Streetview and noted that [one of the houses](#), which is now 154, has a plaque which says “The Gable 1908”. This could mean that the houses where they lived would now be [160-164](#).

<sup>8</sup> He and his wife Ethel appear in the electoral register for Boughton Road, Ollerton from 1925. He and Ethel were still there in the 1939 Register.

<sup>9</sup> According to Gerald Lee’s book “Kirkby-in-Ashfield Yesterday Remembered”, Forest Hill is “the name that sticks with many of the locals” for the eastern part of Diamond Avenue (see Chapter 21, p108).

<sup>10</sup> That he still lived with his parents and they lived on the Forest Hill part of Diamond Avenue

<sup>11</sup> Along with William Smith who I believe was John’s father. He was recorded as being there until 1926.



*Top – photo of The Gables, 154 Diamond Avenue in August 2023. Of additional interest perhaps is the fact that Edith Searson, in her book(let) "I Also Remember", noted that well-known clothier Thomas Banks, who had a [shop on Station Street](#), lived at "The Gables"*

*Above – photo of 160-164 Diamond Avenue taken in August 2023. The house with the large garage is number 164 with numbers descending to the right. I believe these houses are the ones that grandad and his family lived in and they may have been built for them. The large garage is in keeping with them operating a bus. I confess to being intrigued by the large garage and particularly that it has been retained. So, I asked about it on [Kirkby Living Memory Facebook Group](#). Based on comments there, it seems that the Wrights took the house on from the Smiths (Olive and John), in around 1972, and operated a coal delivery firm from there.*



According to the electoral register in 1930, grandma moved in with granddad and his father at 158 Diamond Avenue.<sup>12</sup> From the diaries, I had worked out they were living in a two-storey house somewhere<sup>13</sup> but I had not worked out exactly where. At that time, grandma's parents were living at 61 Milton Street and this is where grandma and granddad went to stay, in 1931, when grandma was very unwell<sup>14</sup> and this was also the address to which some of their wedding cards were sent in 1930.

When grandma was ill, they let granddad's sister, Olive have the house where they had been living which I think was 158 Victoria Road. I am not clear if grandma and granddad owned this themselves or it was something his father had provided. Given that Henry Parkin owned a number of properties, the latter is perhaps more likely.

The family were also constructing at least two houses further along Welbeck Street – numbers 96 and 98. I am not sure precisely who owned the houses but they were clearly intended for grandma's parents and, a couple called Tom and Annie about whom more details are provided in [Chapter 29](#). In November 1932, Tom and Annie and grandma's parents moved into these houses and grandma and granddad moved back to the shop in Station Street. Grandma's parents called their house "Elstow"<sup>15</sup> and mum recalled moving into this house when she was 17, in 1951. This perhaps explains where she got the practice of calling every house in which she lived "Elstow".<sup>16</sup>



In April 1937, after the death of grandma's mother, the family (granddad, grandma and mum), moved to Elstow, presumably to support grandma's father. However, when he died, in July 1937, they moved out back to the shop in Station Street, which is where mum remembered growing up. It is not clear what happened to the house they were living in after they were married, which went to Olive, or what happened to Elstow between August 1937 and when granddad, grandma and mum moved there in the 1950s.<sup>17</sup> It does appear that the Milton Street property was rented out from September 1938 for 14shillings per week.

*Top – 61 Milton Street in August 2023  
Above right – mum's Elstow sign from Rowan Gardens hence the 10. This came to me when she died and is displayed on the wall in my study*

<sup>12</sup> 1930 was the year that grandma and granddad married (see [Chapter 16](#)) and it was also the year that granddad's mother died (see [Chapter 15](#)). John, Olive and Len were living at 162. By 1931, granddad's father had moved out. From the electoral register for 1931, I found a Henry Parkin living in Blidworth Road. For more details see [Chapter 47](#).

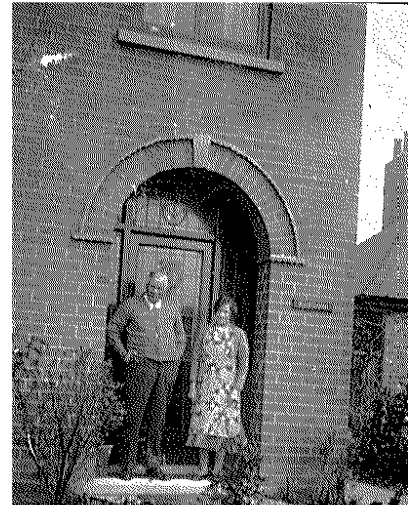
<sup>13</sup> As, when they had a wardrobe delivered in March 1930, granddad had to saw it (in half?) to get it upstairs!

<sup>14</sup> See [Chapter 23](#).

<sup>15</sup> After the Bedfordshire village from which the Cirket family originated. The Holmes did something similar naming their house Delapre which is a place in the south of Northampton.

<sup>16</sup> As far as I recall, she started this when she moved to Grove Avenue and then kept up the practice in New Road and Rowan Gardens. I do not recall this name being used at our family homes in Middletons Lane, Waverley Road or College Road.

<sup>17</sup> In 1939, Samuel Smith, a colliery undermanager was living there with his family.



*Above left – 96 and 98 Welbeck Street*

*Above right – grandma's mum and dad at "Elstow", 96 Welbeck Street*